



Your Concrete Solution



**SPEC**CHEM 

**LITHSEAL SC**

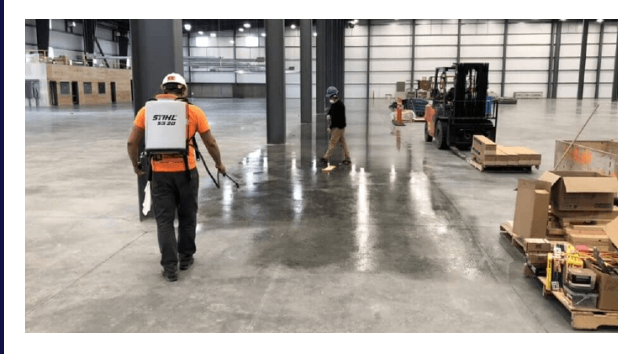
INDUSTRIAL CONCRETE FLOOR SYSTEM



**Official Website**  
[www.specchem.com](http://www.specchem.com)

# COVERAGE:

- Coverage rates will vary with concrete porosity.
- Fresh, Uncured, Burnished Concrete - 800-1000ft<sup>2</sup>/gal



- Existing Steel Troweled Concrete - 400-500ft<sup>2</sup>/gal
- Existing Float Finised Concrete - 250-350ft<sup>2</sup>/gal

# LITHSEAL SC

LithSeal SC is a premium lithium silicate sealer/densifier for concrete surfaces. LithSeal SC deeply penetrates and reacts with cured concrete. This reaction produces a calcium silicate hydrate within the concrete pores. Treated surfaces will remain breathable, reduce porosity, reduce dusting, reduce water permeability and increase abrasion resistance. When properly applied, LithSeal SC will not leave the whitish blush characteristic of other sodium silicate products.



## REDUCE APPLICATION COSTS

One step low pressure spray application on broom or hard troweled finishes.



## ACHIEVE ARCHITECTURAL FINISHES

Does not contribute to Alkali Surface Reaction (ASR), Will not leave a white surface as compared to other silicate products.



## FAST-CURING & VERSATILE

Ready for traffic in one hour for most floors. Can be used interior and exterior, on new or existing concrete.





# The Industry Standard

## SURFACE APPEARANCE

- Surfaces treated with LithSeal SC will increase in hardness, durability and shine over time and regular maintenance.
- To enhance the surface sheen, buff or burnish the dry concrete surface with an orbital floor machine or high speed propane burnishing machine in both directions with a black, then red floor cleaning pad.
- An additional gloss can be achieved on treated surfaces by burnishing with a diamond-impregnated 800 grit or hogs hair pads on a high speed machine. Please consult a professional applicator for this type of procedure.

### PACKAGING:

- 275 gallon totes (1040.9 L)
- 55 gallon drums (208.2 L)
- 5 gallon pails (18.9 L)

### TEMPERATURE LIMITS:

- Freeze Point: 32°F

### DRYING TIME:

- 1-2 Hours

### USES:

- Fresh or existing concrete, interior or exterior

### FUNCTIONS:

- Reduce dusting, porosity, water permeability
- Improves abrasion resistance, light reflectance and gloss

### STORAGE LIFE:

- Shelf life of LithSeal SC in unopened containers is 2 years if properly stored

### EQUIPMENT CLEAN UP

- Equipment can be cleaned with soap and water before the LithSeal SC dries

### PAINTING:

- **Existing Concrete:** Allow SpecHard to dry for 7 days before applying paint.
- **New Concrete:** Allow SpecHard to cure for 28 days before applying paint.

### NOTES:

- A compatible ASTM C309 curing compound such as SpecChem's SpecRez or E-Cure may be applied to finalize the curing process. After the concrete has thoroughly cured, a floor scrubber equipped with a nylo-grit or similar abrasive cleaning pad will remove any residual construction debris, curing compound and further enhance the LithSeal SC surface shine.
- Although LithSeal SC will improve the ability of the treated surface to resist liquid penetration and staining, spills should be cleaned up quickly to minimize any damage.



TDS



SDS



SPEC



Website

[www.SpecChem.com](http://www.SpecChem.com)



(816) 968-5600

# PROJECTS

## **CALIBER RIDGE I**

Greer, SC  
150,000 sq ft

## **WHITE HORSE INDUSTRIAL WAREHOUSE**

Greenville, SC  
300,000 sq ft

## **DUKE REALTY**

Baltimore, MD  
5 Drums

## **SOUTHPOINT 4**

Charleston, SC

## **CALIBER RIDGE I**

Greer, SC  
150,000 sq ft

## **WEST ROCK COFFEE**

Conway, AR  
750,000

## **INDULOR**

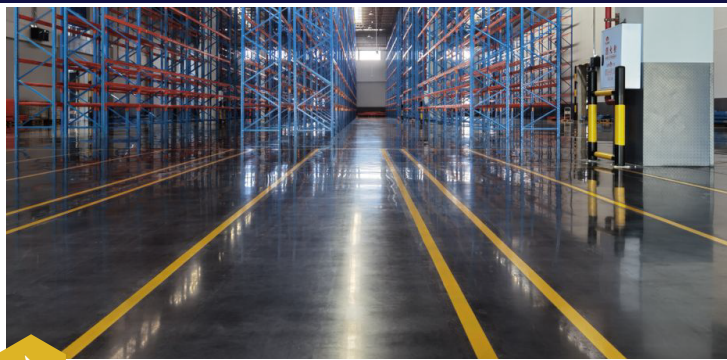
Graham, NC

## **GREENHECK II**

Shelby, NC  
157,000 sq ft

## **AMAZON**

Amarillo, TX



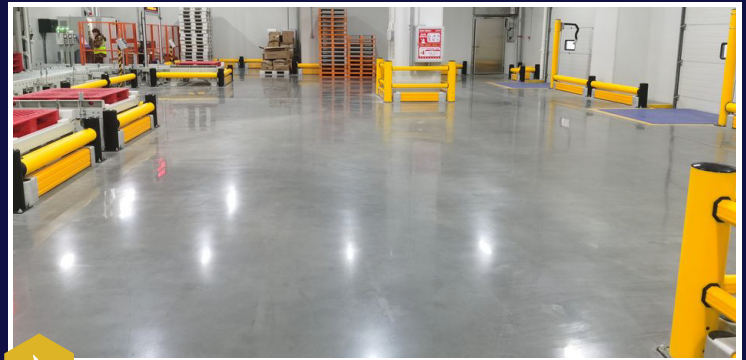
▶ **GUIZHOU YONGHUI LOGISTICS - GUIZHOU, CHINA**



▶ **AMAZON DISTRIBUTION CENTER - DAVENPORT IOWA**



▶ **AMAZON WAREHOUSE - AMARILLO, TEXAS**



▶ **MIXUE ASIA HEADQUARTER - HONG KONG, CHINA**



# SHARE THE SUCCESS

**WEST ROCK COFFEE**  
750,000 sq ft



SpecChem, renowned for their top-notch products, partnered with the proficient team at Command Concrete for a substantial project in Conway, Arkansas. Covering an impressive 750,000 square feet, this project showcases their expertise in industrial flooring.

With the application of SpecChem's key solutions, including E-Cure, LithSeal SC, SpecTilt WB, and Rapid Flex 90, the project unfolded seamlessly. Command Concrete's skillful execution, combined with these high-quality products, resulted in an outstanding outcome that exceeded expectations. The final product is a highly durable industrial floor, an exemplar of quality that will undoubtedly leave a lasting mark in the industry. This project is another commendable achievement for SpecChem and a testament to the collective excellence of the team.

**ADDRESS**

1511 Baltimore Avenue  
Suite 600, Kansas City, MO 64108

**CONTACT**

P : 816.968.5600

**ONLINE**

[www.specchem.com](http://www.specchem.com)



- Breathable
- Fast-Curing
- Can be used interior and exterior

## LithSeal SC

### Lithium-Based Concrete Curing Compound

- Reduce dusting, porosity, water permeability
- Improves abrasion resistance, light reflectance, and gloss
- Deeper penetrating than conventional silicates

LithSeal SC will not leave the whitish blush characteristics of other sodium silicate products when properly applied.



## SPECIFICATIONS

- Recommended for ACI 302. Class 1 through 4 concrete floors, and class 9 super flat floors
- USDA accepted
- Appearance: Clear
- Specific Gravity: 1.04
- Weight/Gal: 8.67 lbs.
- VOC Content = 0 g/l
- Freeze Point: 32°F

## SURFACE PREPARATION:

- Always apply LithSeal SC to a clean surface free of cures, bond breakers, oil, dirt, grease or debris. When necessary, clean concrete surfaces with SpecChem Orange Peel or Berry Clean and neutralize with a neutral ph detergent. Thoroughly flush with water.
- For best results clean the surface with a 60-100 grit sanding screen or diamond abrasive pad. Remove any dust and residue with a thorough water rinse and scrubber. Water rinse and squeegee surface dry.

## APPLICATION

- Apply LithSeal SC with a quality low pressure sprayer. In a single saturating coat. Uniformly spread the LithSeal SC with a soft broom or microfiber applicator to thoroughly coat the concrete eliminating any puddles or excess.
- Apply enough material to keep the surface wet for 15-20 minutes. Apply additional LithSeal SC to porous areas that dry quickly. Let treated areas dry. Remove any dried powdery residue with a stiff broom or floor scrubbing machine.

### USDA ACCEPTED



### SPECIFIC GRAVITY



### SKID RESISTANCE ASTM C-303



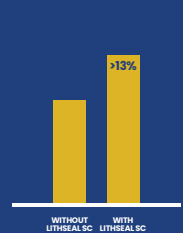
### APPLY IN TEMPS. OF 40°F-100°F



### ASTM C-779 ABRASION RESISTANCE



### ASTM C-140 COMPRESSIVE STRENGTH



### ASTM C-805 IMPACT RESISTANCE



### ASTM C-642 REDUCED PERMEABILITY



### DEPTH OF PENETRATION



# SPEC CHEM

ONE COMPLETE SYSTEM FOR ALL YOUR INDUSTRIAL FLOORING NEEDS.



**ORANGE PEEL  
CLEANER / DEGREASER**



**BERRY CLEAN  
CLEANER / DEGREASER**



**RAPID FLEX 90  
POLYUREA CONTROL  
JOINT FILLER**



**SPECFILM  
EVAPORATION RETARDER**



**LITHSEAL SC  
HARDENER DENSIFIER**



**ALL SHIELD EX  
WATER REPELLENT**



ALSO AVAILABLE IN WATER-BASED!



**INTRAFILM  
FINISHING AID**



**SPECREZ  
CONCRETE CURING  
COMPOUND**



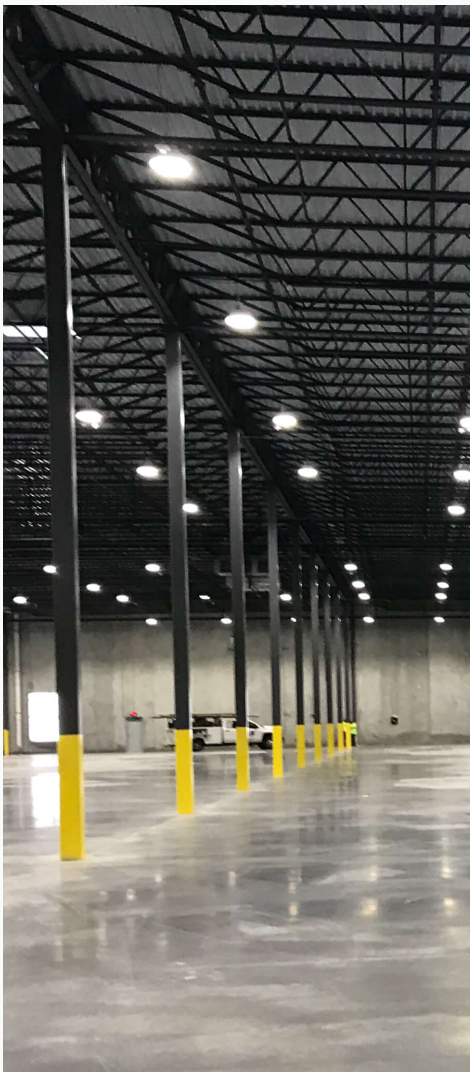
**E-CURE  
CONCRETE CURING  
COMPOUND**



# About SpecChem

At SpecChem, we serve five key concrete markets: commercial, industrial, DOT & infrastructure, residential, and repair & restoration. We are active in nearly every industry trade group related to these key market segments and have a strong team of industry professionals who are focused on building long-term relationships, increasing distributor profitability, continually evolving, developing new products, and providing premium customer service.

**SpecChem is an American manufacturer, headquartered in the heartland, supplying the concrete construction network with high quality, industry-leading concrete construction materials.**



MANUFACTURED IN USA

**SPECHEM**  
Solution to Service

## Get In Touch



(816) 968-5600



[www.SpecChem.com](http://www.SpecChem.com)



1511 Baltimore Avenue, Suite 600  
Kansas City, MO 64108

**Your Concrete Solution**